

# OFFICE SPACE AT HILL CENTER BRENTWOOD

5,387 SF AVAILABLE NOW







## BUILDING H

BUILDING SIZE ±83,000 SF

AVAILABLE 5,387 RSF

DELIVERY IMMEDIATE

1 LEVEL PARKING GARAGE UNDERNEATH  
BUILDING + ADJACENT SURFACE + GARAGE  
PARKING

## READY FOR DELIVERY!

### ADDITIONAL NOTES

- Class A lobby finishes with comfortable seating and meeting areas
- High walkability with immediate access to street level retail and restaurants
- Generous common areas for working and gathering outdoors
- Easily accessible and ample free parking
- Immediately adjacent to a new AC Hotel by Marriott

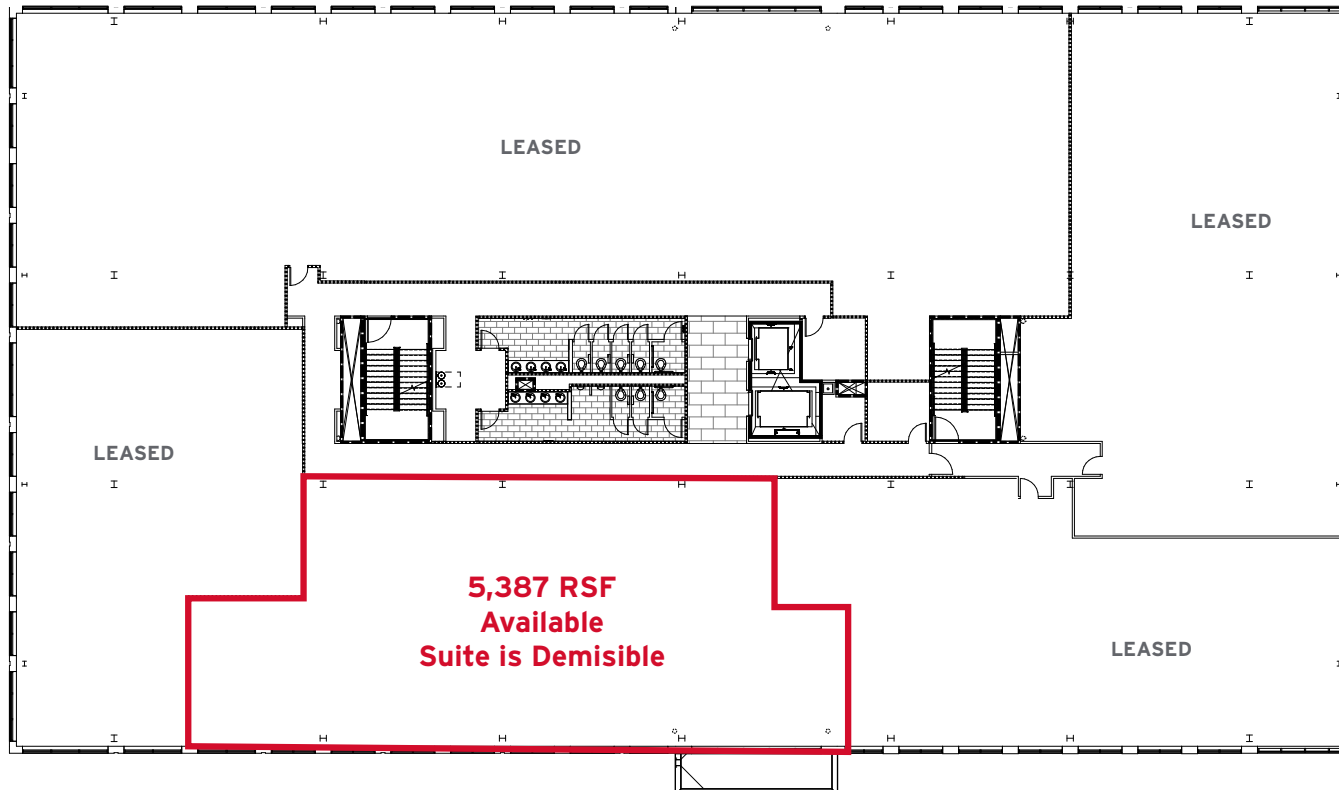
### LOCATION NOTES

- Hill Center Brentwood is the gateway to Maryland Farms.
- Located on the highly visible corner of Maryland Way and Franklin Road
- Easy access to I-65 – Less than ½ mile



## FLOOR PLAN

### 2ND FLOOR





## HILL CENTER BRENTWOOD

Offering upscale office space, boutique retail, and an AC Hotel by Marriott, Hill Center Brentwood brings a sense of “downtown” to Brentwood’s city core. As the front door to Maryland Farms, home to over 5 million sf of office space, this new office and retail center brings a lively bustle while maintaining a local community environment.

Bordered by Maryland Way and Franklin Road, the development offers high visibility with ample flow via multiple signaled entrances, alleviating traffic flow while offering ease of access to patrons and tenants.

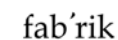
The center is ideal for businesses as it offers walking trails in the adjacent Maryland Way Park and walkability to restaurants, retail, and the YMCA. Employees can enjoy these amenities in addition to the quality of their facilities, thus creating an optimum working environment for businesses to thrive.



### OFFICE TENANTS



### RETAIL TENANTS

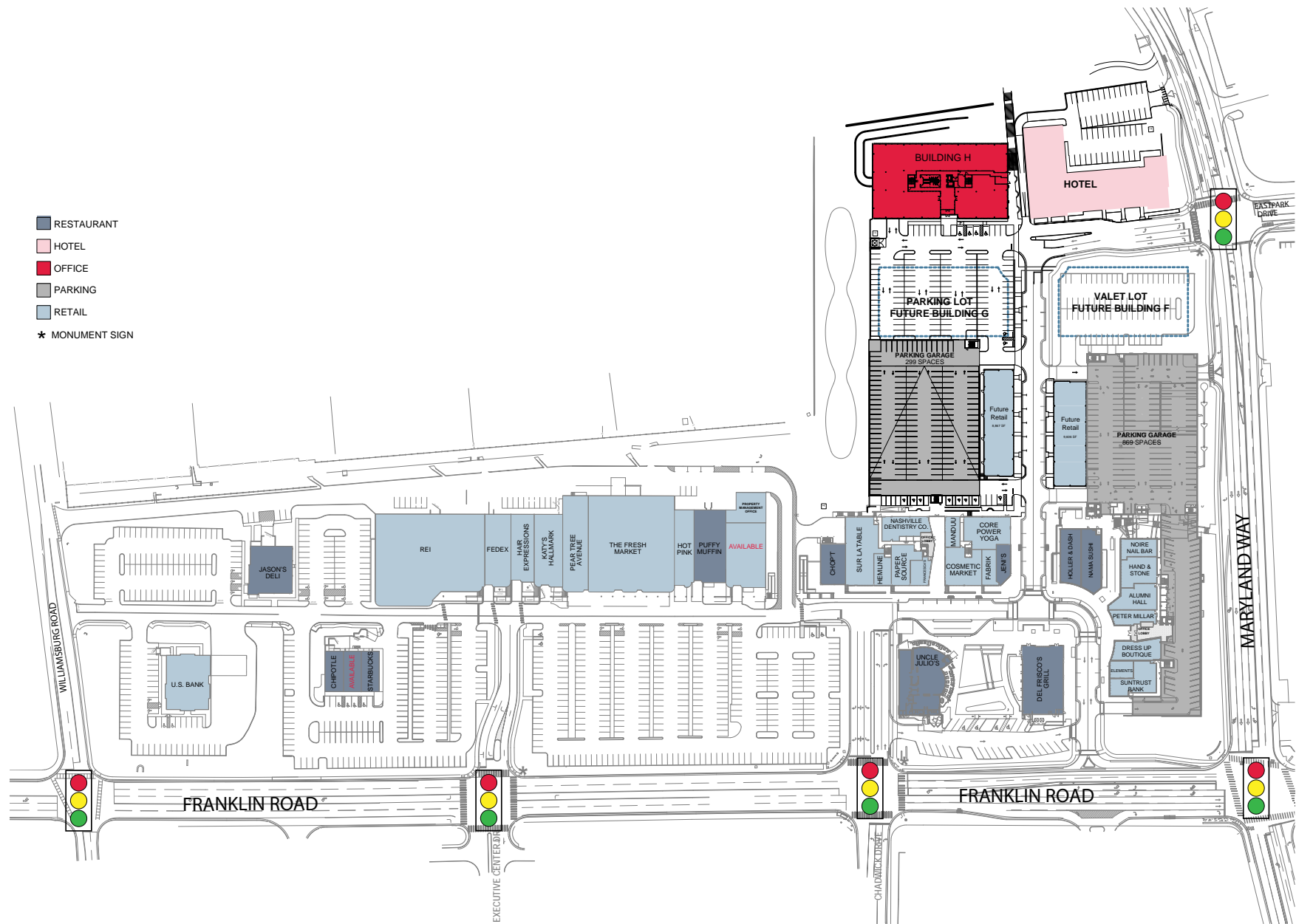




## ADDITIONAL IMAGES



## SITE PLAN





**FOR MORE INFORMATION, CONTACT**

**GREG COLEMAN**

615.250.6370

[gcoleman@southeastventure.com](mailto:gcoleman@southeastventure.com)

**AXSON WEST**

615.250.8670

[awest@southeastventure.com](mailto:awest@southeastventure.com)