

4,605 SF RETAIL SPACE

FRONTING HIGHLY TRAFFICKED 8TH AVENUE SOUTH

FOR LEASE



OPPORTUNITY

Located along the bustling 8th Avenue South corridor just minutes from Downtown Nashville, this street-front retail space offers strong visibility and high traffic counts in one of the city's most active commercial districts. Once part of the historic 8th Avenue Antique District, the area is now home to a growing mix of boutique retail, restaurants, and professional services, creating a dynamic environment for a variety of retail and service users.

PROPERTY SUMMARY

ADDRESS	2107 8th Ave S, Nashville, TN 37204
USE	Retail
SIZE	4,605 SF
DATE AVAILABLE	---
RATE	Contact Broker for Details



4,605 SF



POINTS OF INTEREST / SOUTH

12 South

Berry Hill



Village South

Octave



IMT 8 South

Cilantro

Prisma

Park at Melrose

23Hundred at Berry Hill



Smiling Elephant

Melrose



Lofts on Eighth

Foxtrot Nashville

Suvin Guitars

cosmic connection

SITE



STARLAND VINTAGE

8TH & ROAST COFFEE CO.



LOCAL HONEY

DUNKIN'



twicedaily

BENTON AVENUE

BERRY HILL ANIMAL HOSPITAL

State Farm

8TH AVENUE



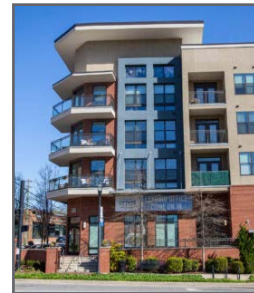
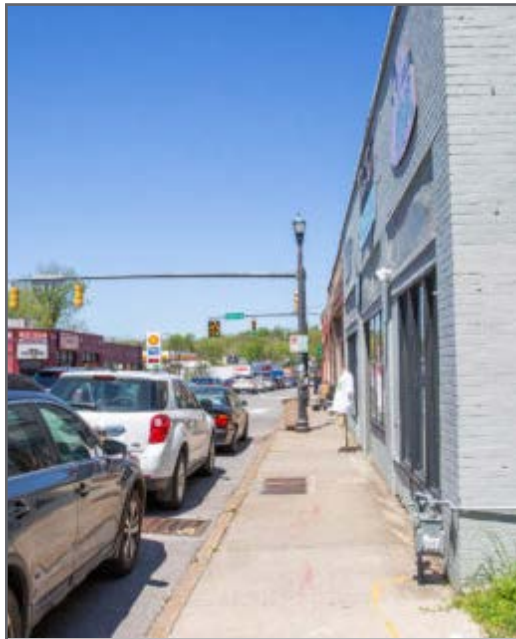
DISCOVER 8TH AVENUE



Nashville's 8th Avenue is a dynamic corridor connecting The Gulch and Melrose, known for its mix of long-standing local favorites and new, exciting businesses. The area has a rich history as a hub for music, entertainment, and unique retail, drawing both locals and visitors. With well-known spots like Zanies Comedy Club and Gruhn Guitars, alongside popular dining options and vintage boutiques, 8th Avenue South offers a distinct blend of culture and character.



Its accessibility and continued growth make it an attractive destination for businesses looking to be part of Nashville's evolving landscape.



FOR MORE INFORMATION
CONTACT

TREANOR GRANBERY
615.347.1310
tgranbery@southeastventure.com

GREG COLEMAN
615.250.6370
gcoleman@southeastventure.com

